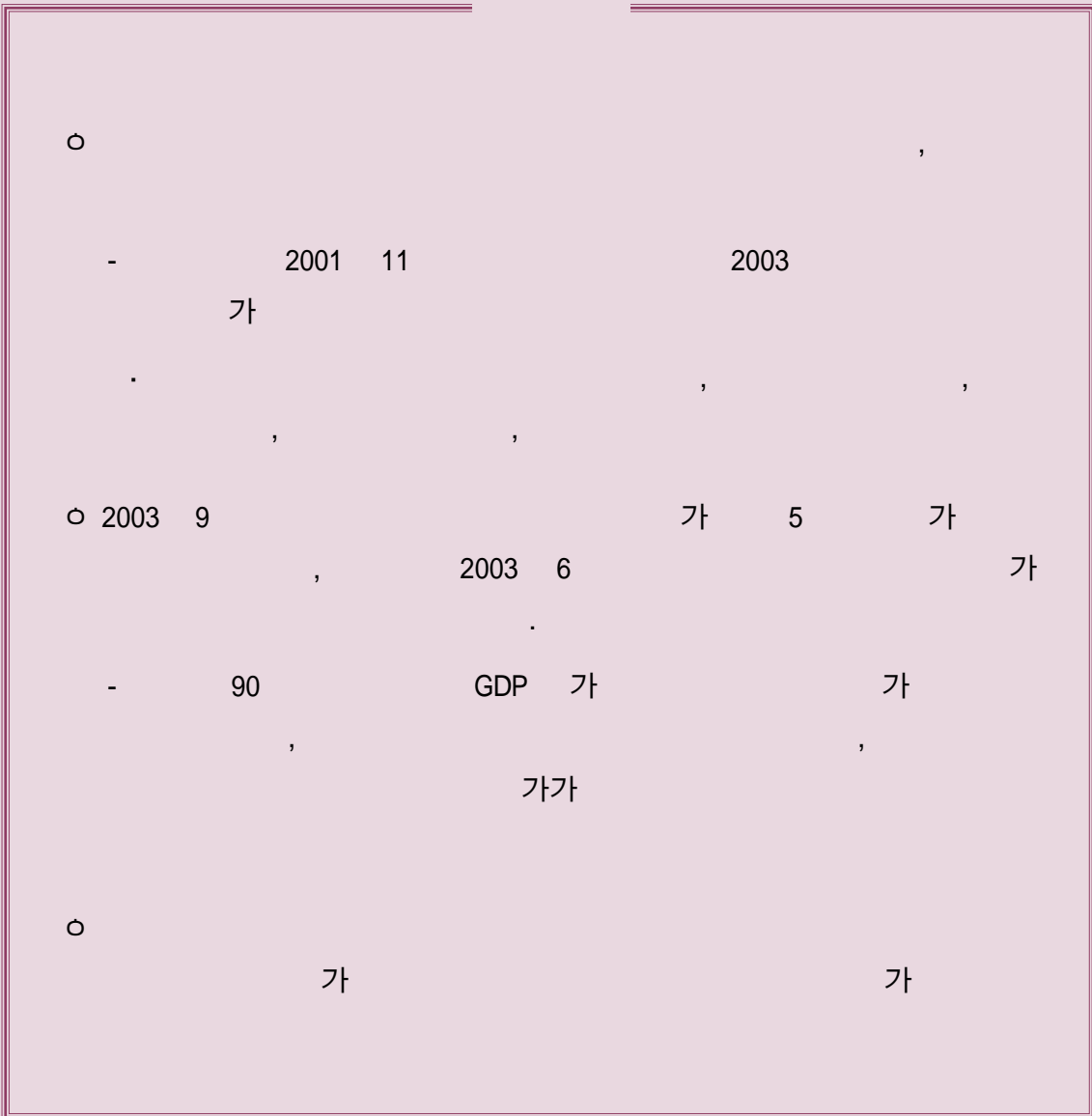




-



産

- 2001 11
 가
 GDP 가 2001
 4/4 2003 2/4 3.1%
 2003 3/4 8.2%

- 2001 2003 6
 6.4% , 2001 11 (5.6%) 0.8%

(= /16
) , 2003 9 62.1% 가 2003 10
 , 11 , 12
 62.2%

- 2.1% ,
 2 가 .
 - 가 가 , 60
 , 1961 8
 (Double-dip) 18 1963 2

- 90 1 , 7
 ,
 . 90
 1991 3 19 1992 10

< 1 >

()

: %,

			가	가	
				(CPS) ()	(CES) ()
2001.11	5.6 (0.2)	8,020 (297)	66.7 (-0.1)	136,234 (-213)	130,900 (-298)
12	5.8 (0.2)	8,291 (271)	66.7 (0.0)	136,078 (-156)	130,661 (-239)
2002. 1	5.6 (-0.2)	8,126 (-165)	66.4 (-0.3)	135,715 (-363)	130,578 (-83)
2	5.6 (0.0)	8,184 (58)	66.7 (0.3)	136,362 (647)	130,510 (-68)
3	5.7 (0.1)	8,278 (94)	66.6 (-0.1)	136,106 (-256)	130,481 (-29)
4	5.9 (0.2)	8,578 (300)	66.7 (0.1)	136,096 (-10)	130,415 (-66)
5	5.8 (-0.1)	8,397 (-181)	66.7 (0.0)	136,505 (409)	130,411 (-4)
6	5.8 (0.0)	8,384 (-13)	66.6 (-0.1)	136,353 (-152)	130,383 (-28)
7	5.8 (0.0)	8,400 (16)	66.6 (0.0)	136,478 (125)	130,204 (-179)
8	5.8 (0.0)	8,335 (-65)	66.6 (0.0)	136,811 (333)	130,224 (20)
9	5.7 (-0.1)	8,269 (-66)	66.8 (0.2)	137,337 (526)	130,289 (65)
10	5.8 (0.1)	8,363 (94)	66.6 (-0.2)	137,079 (-258)	130,408 (119)
11	5.9 (0.1)	8,565 (202)	66.4 (-0.2)	136,545 (-534)	130,409 (1)
12	6.0 (0.1)	8,698 (133)	66.4 (0.0)	136,459 (-86)	130,198 (-211)
2003. 1	5.7 (-0.3)	8,428 (-270)	66.3 (-0.1)	137,447 (988)	130,356 (158)
2	5.8 (0.1)	8,581 (153)	66.3 (0.0)	137,318 (-129)	130,235 (-121)
3	5.8 (0.0)	8,519 (-62)	66.2 (-0.1)	137,300 (-18)	130,084 (-151)
4	6.0 (0.2)	8,799 (280)	66.4 (0.2)	137,578 (278)	130,062 (-22)
5	6.1 (0.1)	8,957 (158)	66.3 (-0.1)	137,505 (-73)	129,986 (-76)
6	6.4 (0.3)	9,245 (288)	66.5 (0.2)	137,673 (168)	129,903 (-83)
7	6.2 (-0.2)	9,048 (-197)	66.3 (-0.2)	137,604 (-69)	129,846 (-57)
8	6.1 (-0.1)	8,929 (-119)	66.2 (-0.1)	137,693 (89)	129,881 (35)
9	6.1 (0.0)	8,966 (37)	66.1 (-0.1)	137,644 (-49)	129,980 (99)
10	6.0 (-0.1)	8,797 (-169)	66.2 (0.1)	138,095 (451)	130,080 (100)
11	5.9 (-0.1)	8,653 (-144)	66.2 (0.0)	138,533 (438)	130,123 (43)
12	5.7 (-0.2)	8,398 (-255)	66.0 (-0.2)	138,479 (-54)	130,124 (1)

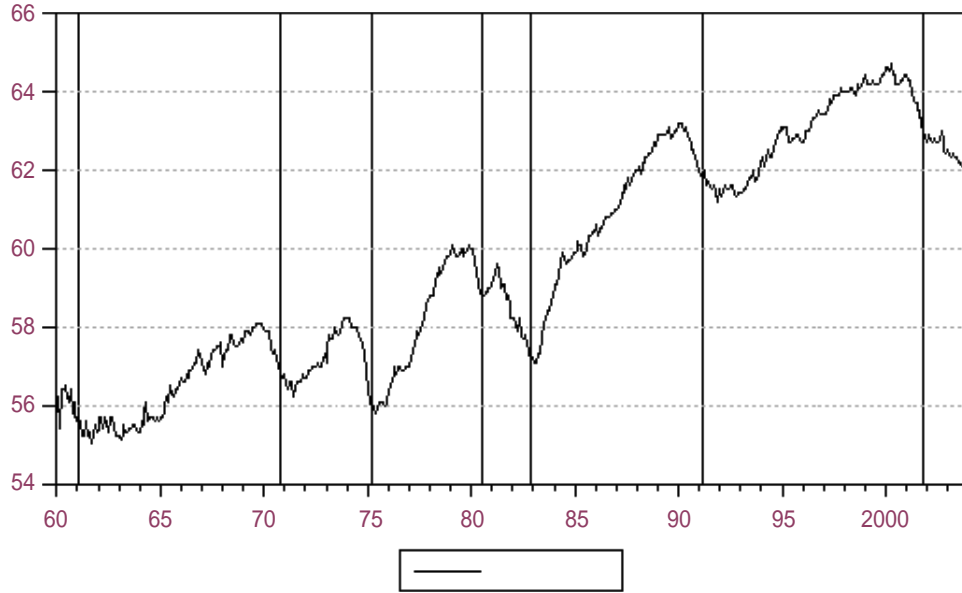
: Bureau of Labor Statistics.

: ()

< 1>

1960

: %



: Bureau of Labor Statistics; National Bureau of Economic Research.
: CPS

産

(, 2003).

-

-

가, 가

IT

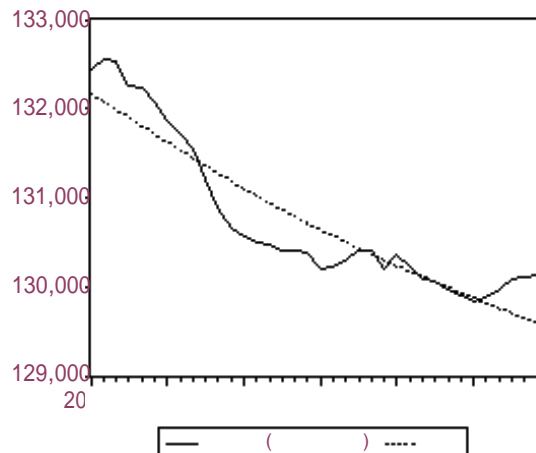
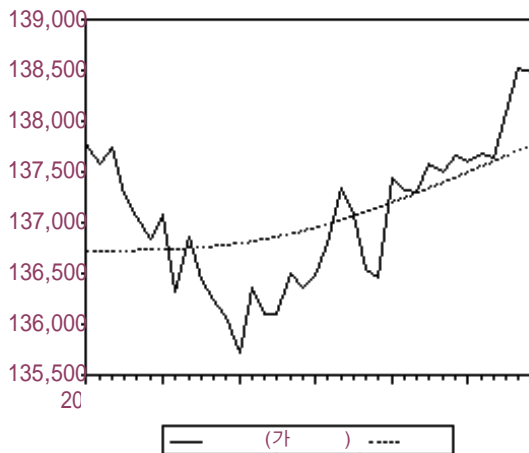
가

- (CES) (,)
 가 , 가 (CPS)
 (,) 2002 1 1 3,571 5,000
 가, 2003 12 276 4,000
 (< 2>).

- , ‘ , 가
 .
 ,
 , 가
 가
 - 가 16

< 2>

()



: Bureau of Labor Statistics.
 : Hodrick-Prescott

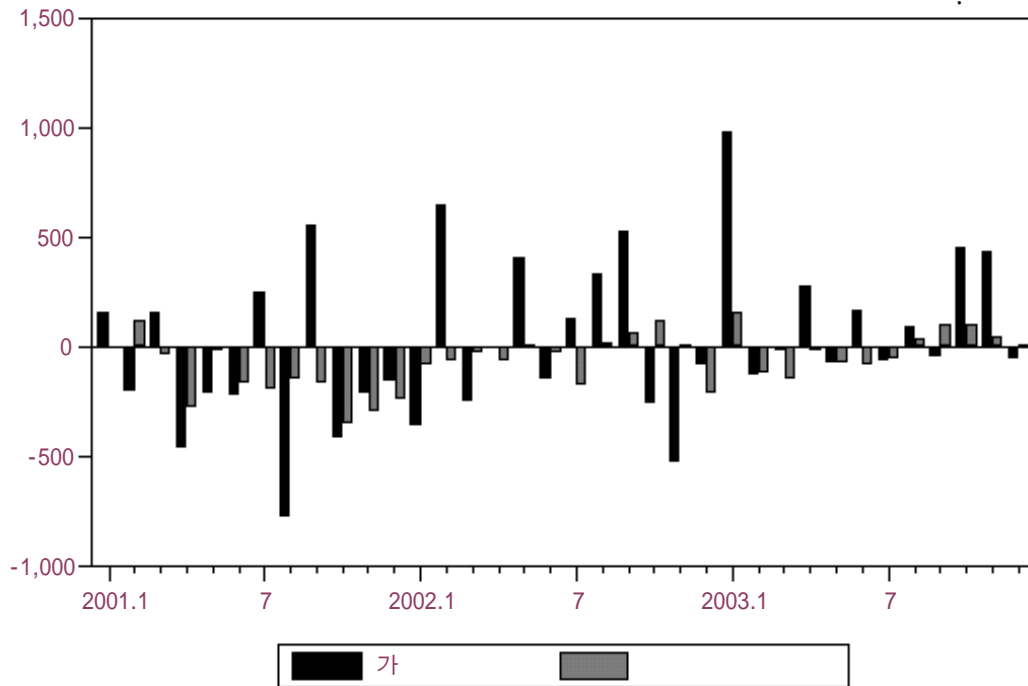
産

2003 9 ()
 가 ' 가

- 2003 8 ~ 11 4
 가 , 12 1,000 가
 - 가 5 가

· 2002 8 ~ 11 4 가 가
 가
 ,
 .
 가가
 ,
 (< 2>).

< 3> ()



: Bureau of Labor Statistics.

< 2 >

()

:

1	158	7	-38	193
2	-121	-38	-60	-24
3	-151	20	-48	-119
4	-22	40	-79	18
5	-76	26	-49	-55
6	-83	14	-54	-46
7	-57	4	-61	3
8	35	21	-39	54
9	99	16	-19	103
10	100	4	-17	112
11	43	14	-26	55
12	1	14	-26	13

: Bureau of Labor Statistics.

- 2003 1 가 , 가 가 , 가 , 2 가 7

- 8 , 가 가 가 2003 12 5

2003 6 6.4% ,

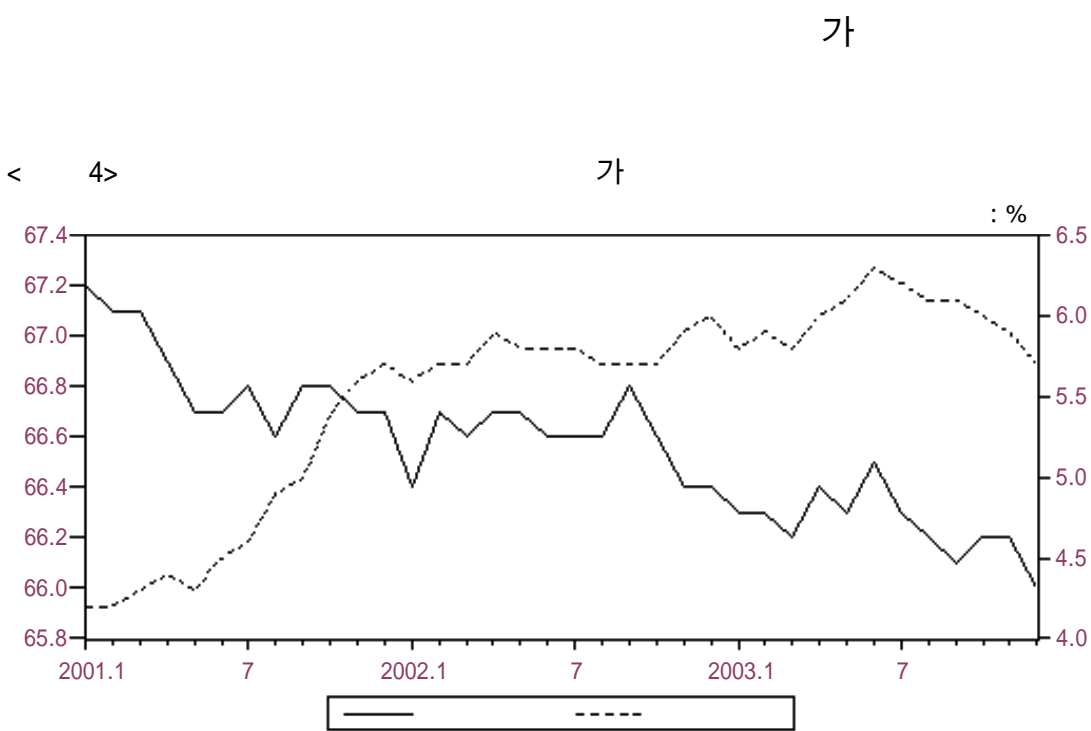
2003 12 5.7%

- () 2003 4 19 45 9,000

2004 1 10 33

4,000 2003 10 4 15 40

가
가 12 -0.2% 2003 9~11 60.0% 가
가
가 90
가 60 60%
가 , 90
66%
· 90 가 가 가 , 2000
4 67.3% 90
가
가 , 80
가
가



: Bureau of Labor Statistics.

가, ,

- 2003 12 0.1% ,

가 37 8,000 , 가 0.7%

가 77 6,000 .

- ,

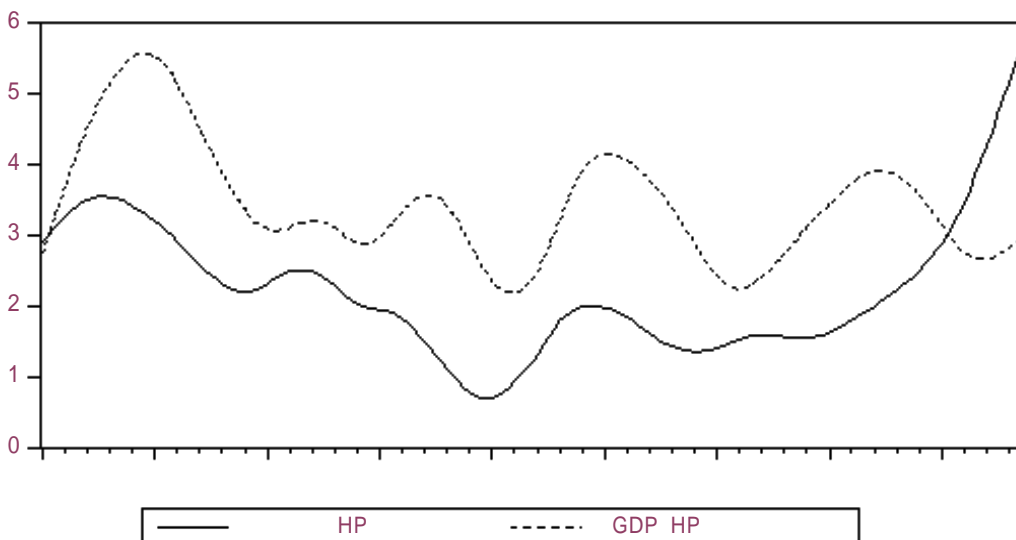
· 12 가 17

가 가 .

가 가

가 가

< 5> GDP 가 가



: Bureau of Economic Analysis; Bureau of Labor Statistics.
 : 가 (annual rate) , Hodrick-Prescott .

- 1960 90 GDP 가
 가 가 , 90
 GDP 가 가 가
 (< 5>).

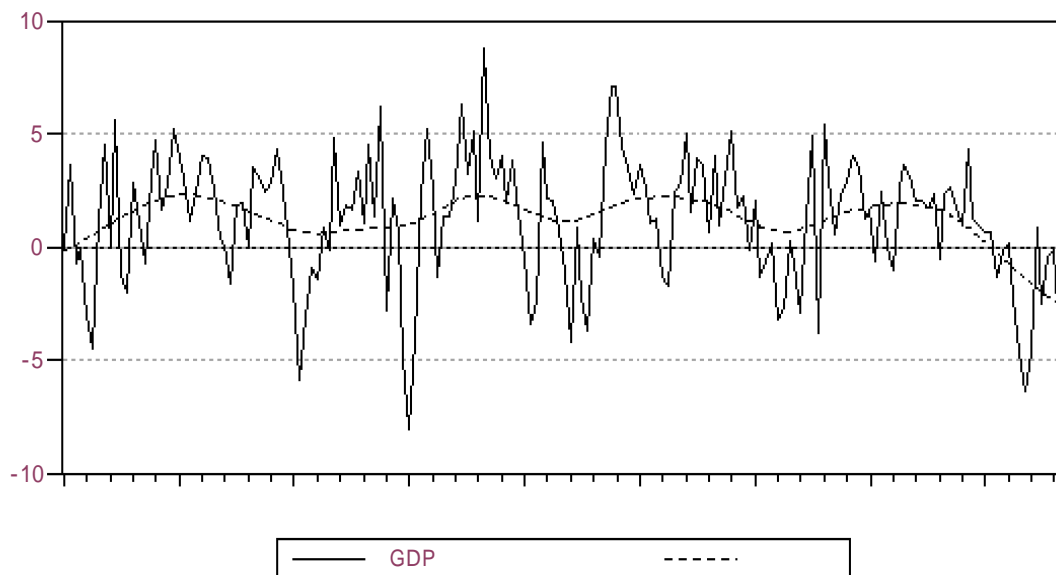
- IT , , .

GDP 가 가 1960
 2000 .

- GDP 가 가
 90 가 ,
 2002 2 , 2001 1 2000 3
 13 (< 6>)

- GDP 가 가
 (< 6>, < 7>
), GDP 가 가

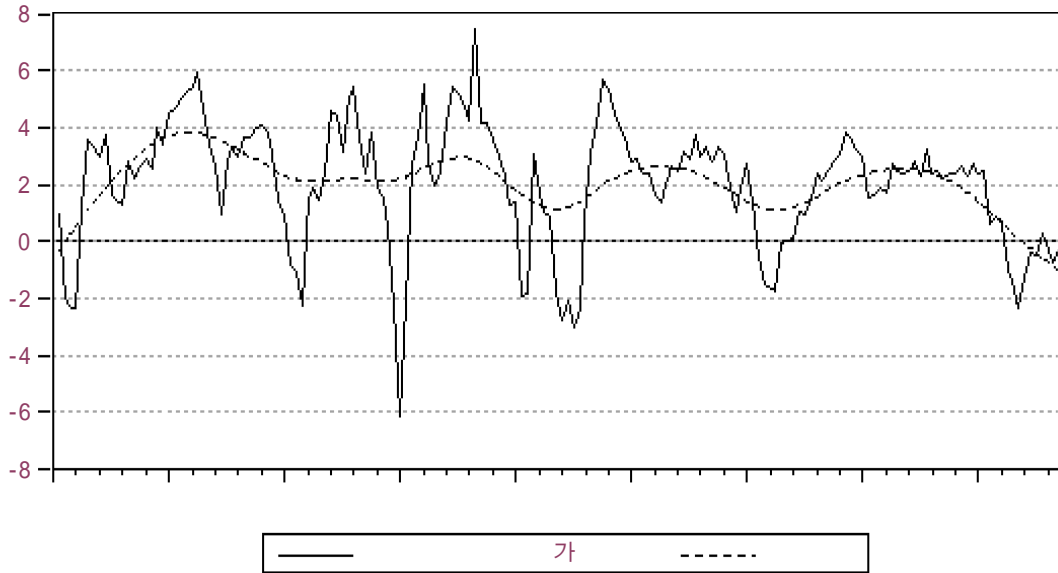
< 6> GDP 가 가



: Bureau of Labor Statistics.

< 7>

가



: Bureau of Labor Statistics.

가

- , 가 가 , 가
가

가가 GDP , 가 ,

가 .

- , 가 가가

가

가

(
choiys@kiet.re.kr
(02-3299-3085)

www.kiet.re.kr