

2004. 7.

• •

---

**【     】**.....1

I. ....5

II. ....6

III. ....16

IV. ....27

V. ....32

.....35

•                    •

---

<	-1>	.....	18
<	-2 >	.....	19
<	-1> .	.....	29
<	-2>	.                    .....	30

•                    •

---

<	-1>	(2001 ) .....	21
<	-2>	.....	22
<	-3>	(2002            ) .....	24
<	-4>	.....	25
<	-1>	.                    (2001 ) .....	31



---

$$\left[ \frac{((\text{가} / (\text{가} + \text{가})) - (\text{가} / (\text{가} + \text{가})))}{((\text{가} / (\text{가} + \text{가})) - (\text{가} / (\text{가} + \text{가})))} \right] \times 100$$

가 ( )      100( )  
 가 ,      가      가      .

2002      1980

-      1994 ,  
 2001

1/3 .

가 (      18.8),      (16.2),      (13.3),  
 (12.6)      가 가 .

-      가 ,      ,      ,      1990  
 가      .

-      가

. , 가

1990 .

- 가 1990 , 1980  
가 .

- . 가  
2001 1990

2002 가

- 2000 2001 ,  
2002 , 가

가 가 ,  
, , 가

- ,  
가

가가  
(adjustment  
assistance)

I.

가

가

가

가

가

가

.

,

.

.

.

.

.





(가 )

- 가

가

가

가 가

가

가

가

가

가

가

가

가

- 가  
가  
가 ,  
가 <sup>2)</sup>  
' (hollowing out) '  
가 , ' ,  
( ) ,  
( ) ( )  
) ( )  
가 .  
, 가 ( )  
)  
, TV ( )

---

2) “ , 小林英夫(2003)

가

) , ( )  
 , ‘ ( )  
 가

3)

가

( )

3)

(deindustrialization)

가  
 가 가 ,  
 가

-

가

가

가

가

0( ) 100( )

/ (= + ) /

가

가

가

가

$$\begin{aligned}
 & \text{, } \quad ( \quad ) \\
 & \quad \text{가(} \\
 & \quad \text{), } \quad \text{,} \\
 & \quad \text{가(} \\
 & \text{:} \\
 & \text{) } \quad \text{가} \quad \text{.} \\
 & \quad \text{.} \quad 0 \quad 100 \\
 & \quad = ( \quad - \quad ) / \\
 & \quad \quad \quad \times 100 \\
 & \text{,} \quad = \quad / \quad ( = \quad + \quad = \\
 & \quad \quad \quad + \quad ) \\
 & \quad \text{.} \\
 & \quad \text{,} \\
 & \quad \text{.} \\
 & \quad \text{.} \\
 & \quad \text{,} \quad \text{,} \quad \text{가}
 \end{aligned}$$

가

- ( )

- 가 ( )  
가 ,

- ( )

( )  
( , )  
, )

가 .

- , 가 가
- ( )가 가
- , 가 가
- ( ) , 가 가
- ( ) , 가 가



, 가 .

.

-

가  
가

.

.

$$\frac{[(\text{ } / (\text{ } + \text{ } )) \text{ } 3 - \text{ } / (\text{ } + \text{ } )] / [(\text{ } / (\text{ } + \text{ } )) \text{ } 3]}{\text{ } ] \times 100^{\text{)}}}$$

( )

가 . 3 ,  
가

5) 6)

---

4)

5) ,

6) 3 가 가 ,

0( 가

) 100(  
7)

---

5 3

(53 )

가

7)

0

## II.

1971

1970

KOTIS

(1)

1994

1998, 99

, 2000

2000

가 3.7

가

. 2002

가 2.1

(&lt; -1&gt; ).

(2)

&lt; -2&gt; &lt;

-1&gt;

가

21

8

2001

가

(

0)

. 8)

8)

가

가 0

가

0

가

가

( )

가

&lt; -1 &gt;

	/	3	
1980	0.7464		
1981	0.7492	0.7523	
1982	0.7611	0.7588	
1983	0.7661	0.7597	
1984	0.7519	0.7552	
1985	0.7476	0.7580	
1986	0.7745	0.7664	
1987	0.7773	0.7793	
1988	0.7862	0.7842	
1989	0.7891	0.7878	
1990	0.7880	0.7862	
1991	0.7814	0.7854	
1992	0.7869	0.7886	
1993	0.7976	0.7916	
1994	0.7903	0.7904	0.165
1995	0.7834	0.7828	1.034
1996	0.7749	0.7746	2.108
1997	0.7655	0.8051	3.298
1998	0.8750	0.8390	-
1999	0.8764	0.8379	-
2000	0.7623	0.8023	3.698
2001	0.7682	0.7685	2.954
2002	0.7751		2.078

: 1998, 99

( &gt; 0 )

가 가 가 가  
 18.8 , (16.2), (13.3), (12.6)

&lt; -2 &gt;

					가				가	
1975	90.999	88.999	96.108	99.218				95.499	95.039	
1976	92.196	91.555	95.919	99.311				95.814	96.202	
1980	90.723	94.667	95.973	99.610				95.126	99.274	
1981	91.228	94.300	95.827	99.711	52.473	89.827	91.891	94.803	99.398	60.525
1982	92.692	93.931	95.616	99.663	52.836	87.200	91.559	94.043	99.213	62.393
1983	93.502	93.620	95.361	99.594	52.605	86.662	90.514	93.442	98.529	62.009
1984	93.505	93.294	94.963	99.506	53.494	86.286	89.946	93.210	97.961	61.863
1985	93.642	92.598	94.611	99.466	54.509	86.976	89.084	92.870	96.961	61.617
1986	93.999	91.590	94.162	99.323	56.888	85.607	89.354	92.875	96.576	61.366
1987	93.863	91.046	94.373	99.316	58.622	87.387	90.434	92.721	96.426	60.381
1988	93.505	90.737	94.561	99.224	61.125	89.839	92.079	92.930	96.743	59.255
1989	93.209	90.608	94.636	99.010	62.959	92.839	93.247	92.762	97.107	58.955
1990	93.062	89.872	93.968	98.690	63.921	92.766	92.978	92.492	97.544	59.548
1991	92.842	89.336	93.187	98.198	64.312	92.742	92.403	92.532	97.913	60.321
1992	92.637	89.162	92.566	97.355	63.780	92.931	92.119	93.425	97.979	59.195
1993	92.329	88.601	91.255	95.712	62.805	93.311	92.122	94.146	97.471	58.891
1994	92.015	87.901	89.679	93.285	60.425	93.440	92.580	94.141	96.709	58.946
1995	91.457	87.219	86.723	90.474	57.841	93.353	92.714	93.513	95.626	60.415
1996	90.788	87.053	84.883	87.462	56.981	93.359	92.493	93.128	94.591	60.182
1997	90.549	87.560	84.662	87.272	60.436	94.034	92.054	93.360	94.408	2.280
1998	90.850	87.731	85.389	88.388	64.940	94.374	92.051	93.273	94.712	63.586
1999	91.043	88.027	84.999	89.635	67.621	94.388	92.088	93.083	95.111	65.103
2000	90.814	87.536	82.767	88.503	65.838	93.553	92.216	92.283	94.798	63.452
1990	0.858	5.049	2.204	1.205			0.081	3.579	1.972	
1991	1.022	5.902	3.294	1.329			0.887	4.093	1.149	
1992	1.811	5.942	3.618	2.018			1.746	2.603	1.361	
1993	1.515	5.601	4.142	3.741			0.995	0.781	1.774	
1994	2.004	7.679	7.387	6.271			0.878	1.837	2.682	
1995	2.811	8.162	8.537	9.322			0.274	2.619	3.660	
1996	3.297	7.764	13.370	12.197			0.561	2.748	5.046	
1997	4.138	8.202	13.132	15.334			1.591	3.043	5.805	
1998	3.575	6.555	9.225	9.893			1.684	1.891	4.212	
1999	2.337	7.222	11.101	8.841			0.574	3.021	4.127	
2000	3.522	7.266	14.349	11.581			1.470	3.639	4.599	
2001	4.307	8.109	16.193	13.300	0	0	1.272	4.396	5.158	0

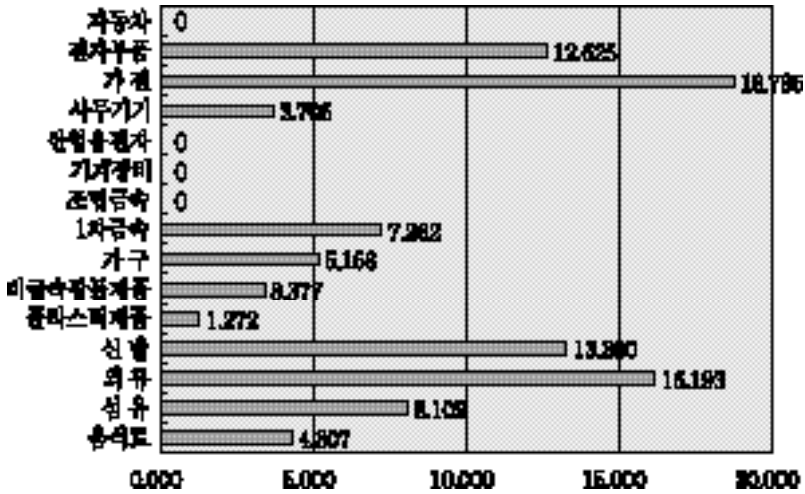
	1					가				
1981	81.130	86.967	51.619	45.508	41.627	89.716	60.246	93.664	49.865	92.021
1982	82.556	87.453	55.611	45.483	41.326	90.406	59.485	93.782	53.102	92.456
1983	81.150	86.364	58.270	44.106	43.851	90.878	57.428	93.132	55.054	93.080
1984	79.366	85.374	59.190	43.246	50.354	90.679	57.468	92.654	56.113	93.464
1985	77.301	84.351	59.526	42.040	50.612	90.459	56.376	92.242	53.190	93.411
1986	76.845	84.539	59.401	44.012	50.898	90.156	57.661	92.331	54.746	92.820
1987	75.991	85.709	61.385	43.298	50.211	90.245	59.428	92.710	56.927	92.879
1988	75.724	87.169	62.699	43.854	50.424	90.790	62.284	93.954	63.288	93.752
1989	76.103	88.173	64.642	42.646	50.085	91.858	63.972	95.055	66.402	95.228
1990	75.622	87.763	67.166	42.181	50.811	92.218	62.981	95.373	70.434	95.443
1991	76.410	87.325	69.693	41.569	52.057	92.258	61.105	95.797	73.432	95.578
1992	77.038	87.377	73.380	39.381	57.927	91.516	62.079	94.985	76.436	95.726
1993	77.674	88.209	74.058	39.734	62.618	91.062	64.807	95.010	76.481	96.001
1994	76.381	88.894	74.913	38.087	66.688	90.483	69.585	94.141	75.872	95.924
1995	75.173	89.268	74.778	38.803	65.571	90.421	70.318	94.342	75.894	95.730
1996	74.662	89.248	75.878	42.567	69.660	88.096	68.233	92.885	75.652	95.801
1997	75.935	89.173	77.581	49.444	74.294	85.848	64.317	91.975	75.212	96.133
1998	76.291	89.148	78.727	54.415	78.653	82.428	61.677	90.256	75.211	96.500
1999	76.760	89.169	79.462	54.399	77.667	80.412	61.985	88.650	76.048	96.723
2000	76.247	89.201	80.200	53.627	75.979	77.628	61.978	87.383	77.291	96.640
1990	6.790									
1991	10.219					0.410				
1992	5.327					0.536				
1993	4.506					1.466		2.122		
1994	7.910					1.886		0.774		
1995	10.023					2.420		2.290		
1996	8.898					1.667	1.384	1.492		
1997	9.764					9.445	11.623	5.335		
1998	5.399					9.731	12.598	5.143		
1999	7.603				1.480	12.788	12.646	6.875		
2000	8.061				5.016	15.999	10.310	10.363		
2001	7.262	0	0	0	3.706	18.785	12.625	9.111	0	0

:

.

< -1>

(2001 )



1990

, 가 가

1990

, , , , , 가  
가

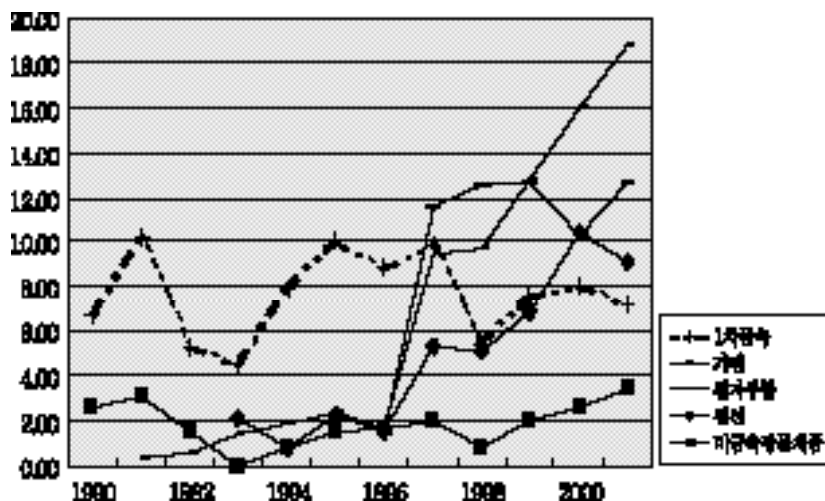
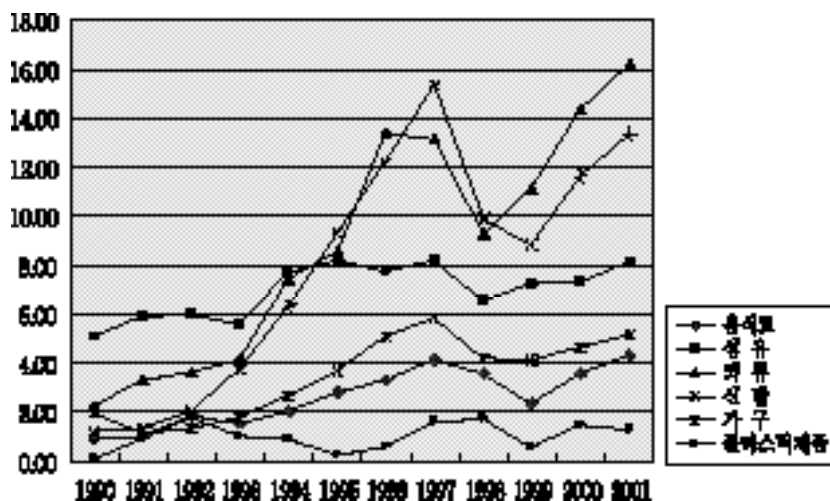
. 1 , , 1990

가

(< -2> ).



&lt; -2&gt;



(3)

$\langle -4 \rangle$        $\langle -3 \rangle$   
 $\langle -4 \rangle$        $\langle -3 \rangle$

가

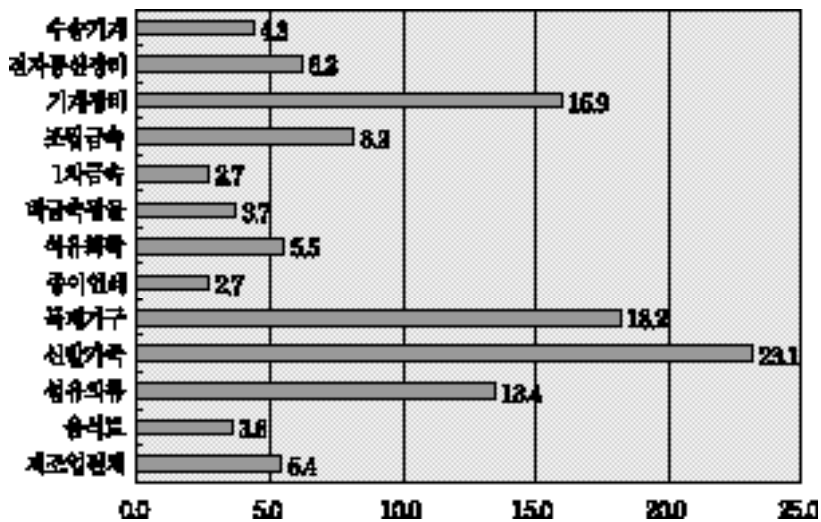
- 가  
 가  
 - 가

---

9) 가 가  
 가 가

가

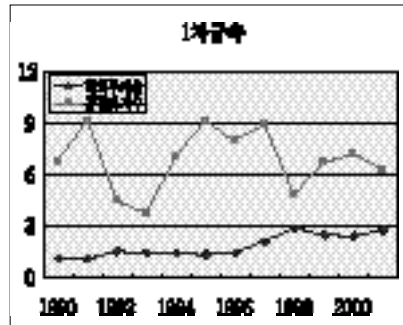
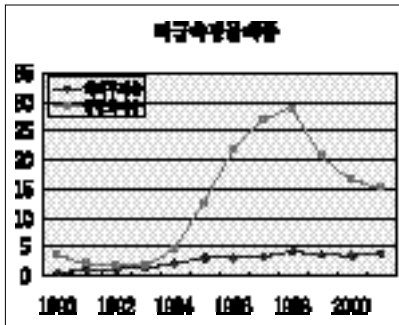
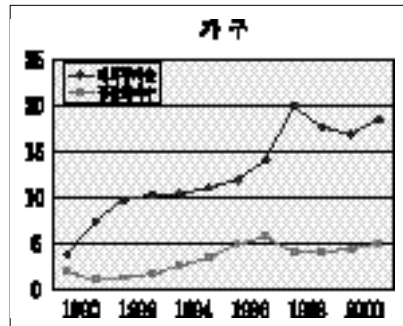
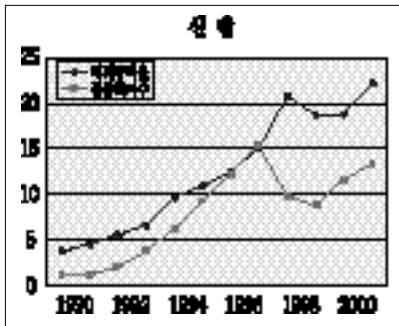
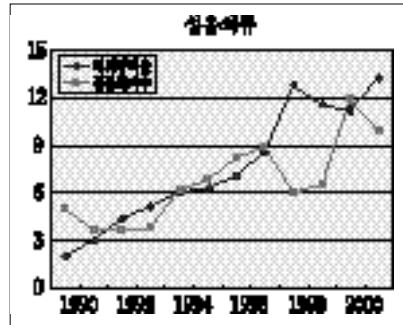
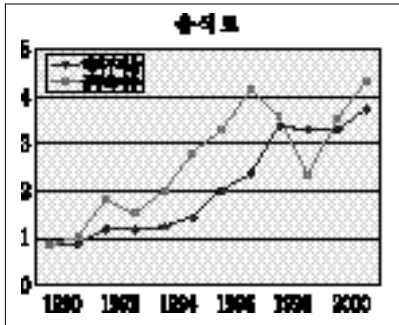
< -3> (2002 )

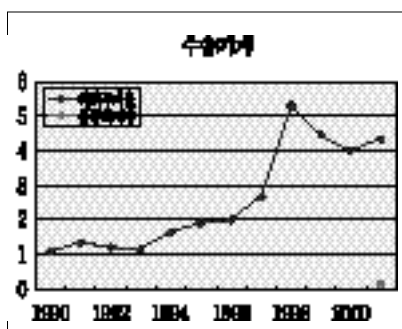
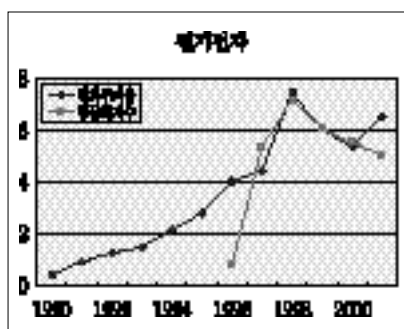
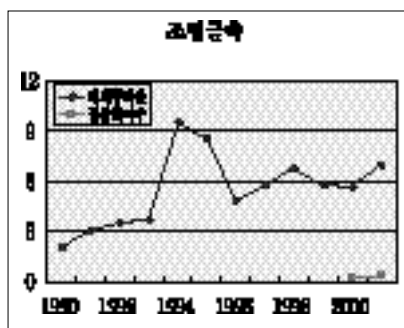


: (            / (            +            ) ) × 100

가

&lt; -4 &gt;





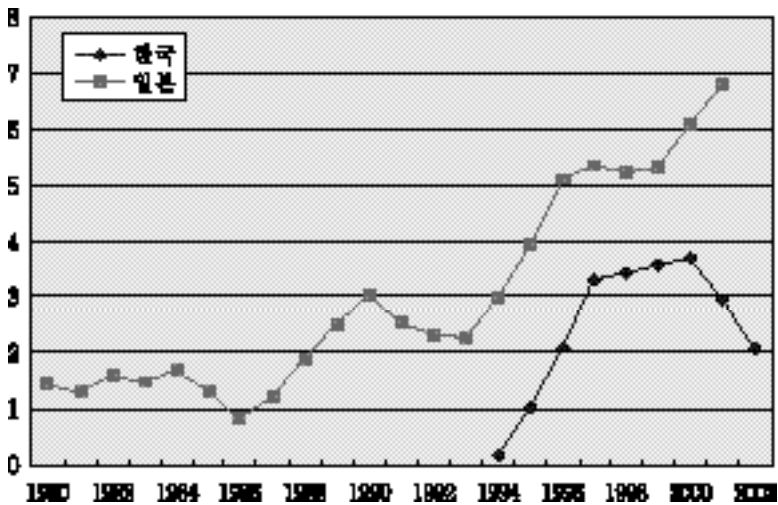
## IV.

1990 , 2000 1980  
 (< -1> ).  
 2001 6.8 3  
 . 2002  
 1980  
 ,  
 < -2> < -1> .  
 가  
 ,  
 가  
 (1980 )  
 1980 가  
 , 1 (1980

) 1990  
가 .  
가 가  
( 12.7) ,  
(9.9)가 가 1 (6.3), (5.0),  
(4.3) .  
- 1970 1970 1960  
1970 가 1960  
가 .  
가  
1990  
- .  
가 가  
가 2.5 ,  
1990 .  
- , , , 가  
2 5

&lt; -1 &gt;

1980	1.458	1992		2.339
1981	1.291	1993		2.276
1982	1.591	1994	0.165	2.979
1983	1.477	1995	1.034	3.918
1984	1.692	1996	2.108	5.115
1985	1.326	1997	3.298	5.355
1986	0.828	1998		5.219
1987	1.222	1999		5.321
1988	1.882	2000	3.698	6.093
1989	2.504	2001	2.954	6.790
1990	3.032	2002	2.078	
1991	2.543			



: 1998, 99



&lt; -2&gt;

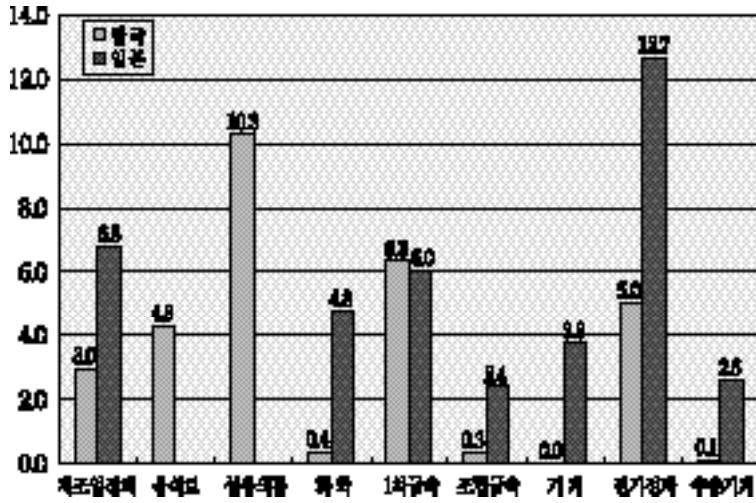
					1				
1990	0.9	5.4			6.8				
1991	1.0	4.1			9.2				
1992	1.8	4.1			4.5				
1993	1.5	4.2			3.8				
1994	2.0	6.6			7.0				
1995	2.8	7.2		0.7	9.2				
1996	3.3	8.6		0.4	8.0			0.8	
1997	4.1	9.4		1.4	8.9			5.3	
1998	3.6	6.4		0.0	4.8			7.2	
1999	2.3	7.0		0.1	6.8			6.1	
2000	3.5	12.3		0.0	7.2	0.2		5.5	
2001	4.3	10.3	0.0	0.4	6.3	0.3	0.0	5.0	0.1

1980	n.a.	n.a.	2.2	1.1	2.2	0.4		0.6	0.7
1981	n.a.	n.a.	1.5	1.2	3.1	0.4		0.3	0.7
1982	n.a.	n.a.	2.0	1.8	3.3	0.6		0.6	0.0
1983	n.a.	n.a.	1.9	1.8	3.7	0.6		0.2	0.8
1984	n.a.	n.a.	2.1	2.1	4.7	0.6		0.3	0.5
1985	n.a.	n.a.	1.9	1.7	3.9	0.3		0.4	0.5
1986	n.a.	n.a.	1.5	1.4	5.5	0.2		0.2	0.4
1987	n.a.	n.a.	1.9	1.6	4.3	0.3	0.1	0.1	0.6
1988	n.a.	n.a.	2.3	2.0	5.5	0.5	0.2	0.4	0.8
1989	n.a.	n.a.	3.1	2.4	5.7	0.7	0.5	1.1	1.0
1990	n.a.	n.a.	2.3	2.3	5.6	0.8	1.6	2.0	2.2
1991	n.a.	n.a.	1.6	2.2	5.0	0.8	1.2	1.9	1.6
1992	n.a.	n.a.	1.5	1.8	3.6	0.7	1.1	2.0	1.4
1993	n.a.	n.a.	1.3	1.6	3.4	0.7	1.0	2.5	1.2
1994	n.a.	n.a.	1.8	2.1	4.1	0.9	1.3	3.6	1.8
1995	n.a.	n.a.	2.7	2.4	5.5	1.2	1.7	5.9	2.2
1996	n.a.	n.a.	2.7	2.9	5.3	1.4	2.7	7.9	2.8
1997	n.a.	n.a.	2.5	3.5	5.9	1.6	3.1	8.3	2.8
1998	n.a.	n.a.	2.5	3.6	5.8	1.6	3.2	8.7	3.2
1999	n.a.	n.a.	2.1	3.5	5.6	1.6	2.8	9.1	3.1
2000	n.a.	n.a.	2.9	3.7	6.6	1.9	3.0	11.3	2.5
2001	n.a.	n.a.	2.9	4.8	6.0	2.4	3.8	12.7	2.6

:

&lt; -1&gt;

(2001 )



V.

-

-

가가 가  
가 .  
가

-

가

가

가

2002

가

- 2002

2000

2001

-

가 1980  
가

,

-

가

가 ,  
가

, ,

-

,

가

가

-

,

가

가가

(adjustment assistance)

< >

“ 가 ”, CEO Information 414 ,  
 , 2003. 8.

“ 가 ”, e-Kiet  
 120 , 2002. 11.

“ 가 ”,  
 , 2003.

“ ”,  
 , 2002.

“ ”, LG , 2002.

“ ”,  
 2002.

“ ”,  
 , 2002.

“ 가 ”,  
 , 2002.

“ ”, 2002.

“ ”, 2002.

小林英夫, 「産業空洞化の克服 - 産業轉換期の日本とアジア」中央公論社,  
 2003.

Bluestone, B. and B. Harrison, The Deindustrialization of America: Plant  
 Closing, Community Abandonment, and the Dismantling of Basic

Industry Basic Books, New York, 1982.

Development Bank of Japan, " U.S. Competitiveness Policy and Its Implications for the Hollowing Out of Japan 's Manufacturing Industry", Tokyo, 2001.

\_\_\_\_\_, " The Hollowing Out of Industry : Current Assessment and Future Developments, " Tokyo, 2002.

Staudohar, W. and H. Brown, Deindustrialization and Plant Closure, Lexington Books, Mass. 1987.

Tejima, S., " Japanese FDI, the implications of hollowing out on the technological development of host countries," International Business Review, vol.9, pp. 555 ~ 570, 2000.

Williams, K., J. Williams, and C. Haslam, " The Hollowing Out of British Manufacturing and Implications for Policy, " Economy and Society, 19(4), pp. 456 ~ 490, 1990.

Issue Paper 2004-163

---

---

發行處：產業研究院( 特別市 東大門區 清涼里洞 206-9)

發行人：

---

登錄：1983年 7月 7日 第6-0001號 / 電話：3299-3114(代)

---

印刷：2004年 7月 23日 / 發行：2004年 7月 26日

---

印刷處：

---

ISBN 89-90789-54-0 93320

---

---

購買問議： (3299-3151)  
內容 無斷轉載 譯載 禁 .  
普及價 3,000